

---

# Long Ditton St Mary's CofE Aided Junior School

---

## School Profile 2005-2006

---

*The information provided was correct at the time of publishing. Please be aware that details may have changed.*



### Long Ditton St Mary's CofE Aided Junior School

Sugden Road  
Thames Ditton, Surrey, KT7 0AD  
Telephone: 020 83981070

<http://www.longdittonsm.org.uk>

<b>Children's Service Authority:</b>	Surrey
<b>Age range:</b>	7-11
<b>Number of pupils:</b>	180
<b>Head teacher:</b>	Mrs C S Woods
<b>Chair of governors:</b>	Sir George Vallings

### What have been our successes this year?

Successes this year include:

Highest ever SATs results - 96% of pupils with level 4 or above in English & Science & 55% at level 5. Above average results in maths at 74%, with over 50% at level 5.

Re-vamp of ICT suite with the installation of flat screen 1:1 computers & air conditioning. Participation in PSLN programme enabling a Maths focus for the Gifted & Talented to come to the fore. INSET work with 4 other schools, fantastic NACE trainers has given staff confidence/ideas for termly planning & teaching of problem solving.

Positive ongoing external assessment for "Healthy Schools Award" indicates this should be awarded by December 2006.

Continuing close links with partner schools in ICT, art, DT, music & dance.

School oversubscribed for second year for Y3 places.

Physical environment changes include new School entry doors & decoration. All fiction library books entered on Junior Librarian computer system showing we have 4000 fiction books & £14.000 of non-fiction.

### What are we trying to improve?

There were 4 main areas for improvement in the 2005/6 SDP.

Continuation of Primary Leadership Project curriculum planning work & resourcing for 2nd cycle of foundation subjects. Alongside this are the establishment of portfolios of levelled examples of work in art, DT, history & geography.

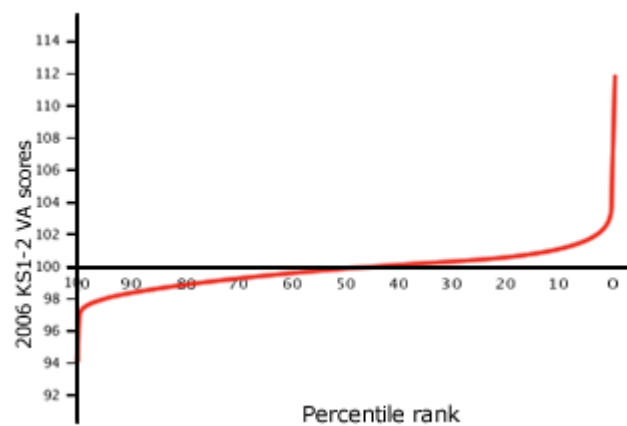
Integration of ICT into all curriculum areas which is now possible for all classroom teachers with the provision of interactive whiteboards & the hall projector.

Improvement of attainment in science as SATs results in this area have "dipped" over the last two years.

Assessment tasks/methods for history, geography & science.

In addition, the improvement of the physical environment for pupils has centred on the provision of air conditioning in the ICT suite, new security entrance doors into the building & lobby decoration.

### How much progress do pupils make between age 7 and 11?

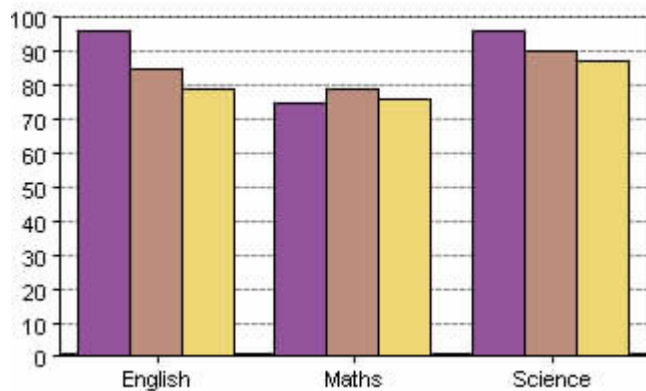


The chart shows our school's value added (VA) score relative to that of other primary schools. VA is a statistical means of assessing how effective a school is, by measuring pupils' progress using their test and examination results. The percentile rank shows the percentage of schools with a score equal to or higher than ours.



Our school

### How well do pupils achieve at age 11?



This chart shows the Key Stage 2 results for 2006. It indicates the percentage of pupils eligible for KS2 tests (usually 11 year olds) who achieved or exceeded the expected level (level 4)



Our school



Local schools (Local Authority)



All schools

### How have our results changed over time?

2006 produced the best ever results in both English & science with all but 2 pupils out of 50, gaining a level 4 pass in each of these 2 subjects. Well over half of these pupils were awarded a level 5. Maths was 74%, which too is very creditable & all results are above both the national & Surrey LEA expected levels/targets.

The figures below show the results over the last 6 years. They are laid out as:-

	English L4	English L5	Maths L4	Maths L5	Science L4	Science L5	Number in year	Value per pupil
2000	78%		59%		83%			
2001	81%		74%		81%			
2002	83%		87%		94%			
2003	88%	35%	88%	35%	92%	56%	32	3.4%
2004	94%	67%	85%	45%	88%	55%	52	2.0%
2005	90%	47%	83%	47%	93%	70%	30	3.3%
2006	96%	58%	74%	56%	96%	58%	50	2.0%

### How are we making sure we are meeting the learning needs of individual pupils?

With a variable number of pupils in each year group & a PAN of 45, all classes are vertically grouped by age, gender & ability. Class groupings change yearly. Morning sessions largely focus on numeracy & literacy. In these subjects pupils are arranged:

Literacy - 4 groups of age appropriate Yrs 3/4/5/6 pupils. Two groups of mixed age Yrs 3/4 & 5/6 pupils for those finding literacy challenging & are not meeting age appropriate targets. Groups are supported by TAs.

Numeracy - 4 classes of age appropriate pupils, supported by TAs & 2 classes of more able Yrs 3/4 & 5/6 mathematicians.

Afternoons are spent in class groups focusing on the foundation subjects, ICT & science. Work for these is carefully planned over a 2 year cycle & differentiated according to ability & outcome.

Those pupils on the SEN register at Action/Support Action+, or with a Statement may be taught 1:1, inside or outside the classroom in small groups by experienced TAs. Termly IEPs are planned for SA+ & statemented pupils which are discussed with parents.

Surrey LEA provide support for staff, pupils & parents through their MPTs who visit the School twice yearly to assess & monitor needs we identify.

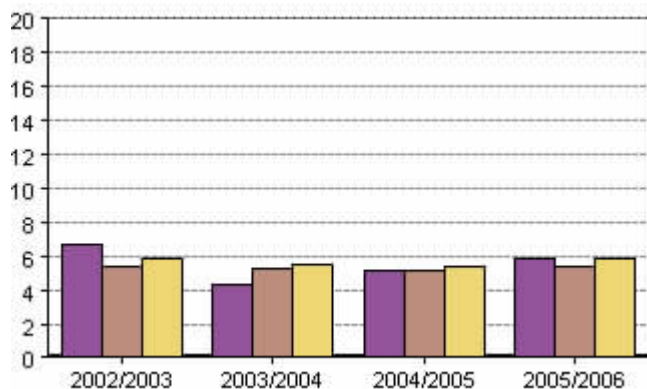
### How do we make sure our pupils are healthy, safe and well-supported?

Very close links with our Church encourages spiritual well being for all. Parents & visitors value our nurturing environment. Pupils focus on the needs of others & raise money for many charities.

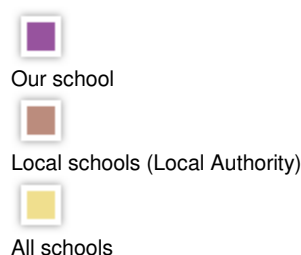
School is part of the Surrey Healthy Schools Initiative. Diet & healthy eating are taught in science, PSHCE & Assembly. Our on site caterer cooks superb meals for staff & pupils. No fizzy drinks, sweets or chocolate should be in packed lunch boxes. The PTA supports us in this & mirrors our values at their functions. Alternative small gifts are suggested instead of sweets for class birthday treats.

All pupils have 2 sports lessons a week. Hockey, basketball, cricket, tennis, netball, rugby & football are offered as after School activities. School arranges an inter house sports day & swimming gala.

### How do our absence rates compare with other schools?



This chart shows the percentage of half days missed through authorised and unauthorised absence by all pupils at the school. Information is given for the school, for schools within the local authority and for all schools.



### What activities are available to pupils?

Before School :- Running & Brain Gym.  
 During the day :- Music lessons for guitar, clarinet, brass, piano, violin  
 At lunch time :- ICT, choir x2, keyboard, chess  
 After school :- choir, recorder, football (boys & girls), drama, netball, basket ball, cricket, tennis, rugby  
 Clubs may be free, paid for, by invitation or open to all  
 "Clubland" provide after school care until 6.00pm  
 When applicable drama, music, PE, science & topic related activities are scheduled. Cycle proficiency for Yrs 5/6, pedestrian training for Yrs 3/4, Junior Citizen are arranged locally.  
 Day visits this year have been to Portsmouth, Hinchley Wood H/S, Guildford Cathedral & the Spectrum.  
 Three residential journeys take place yearly :-  
 Yr4 to PGL at Hindhead  
 Yr5 to Hindleap Warren &  
 Yr6 to "Little Canada" on the Isle of Wight

### How are we working with parents and the community?

**Parents**  
 Monthly activities are arranged by the PTA "Friends of LDSM" & vary from social to fundraising & educational. Parents help out in School with art, DT, swimming, reading & trips. Regular links are via homework diaries, newsletters, open evenings, termly "teach ins" & reports.

**Community**  
 School is superbly supported by St Mary's Church through Assemblies, premises & fundraising links. Our links with GDBE are equally strong through courses, visits & retreats. The village community use

our premises for their annual fair & Stagecoach, RSPCA, Residents' Association, Brownies, Muslim & Jewish groups regularly hire the site.  
Residents from Clayton House & neighbours attend fairs & drama productions. School offers work experience facilities to High school pupils & University students.

### **What have pupils told us about the school, and what have we done as a result?**

#### School Council

Future strategies/concerns are discussed at fortnightly meetings. Class reps then feed back & gather information from their class during PSHCE. "Fruity Fridays" continued on a fortnightly basis as part of our Healthy Eating Initiative.

#### House/Vice captains

Activities are planned to engage pupils. This year a colouring competition, welly throwing, talent show & International Day have all taken place. Charities supported by these activities are Kingston Hospital Cancer Appeal, Wallace & Grommit Children's Foundation, Love Russia, UNICEF & Oxfam.

#### Questionnaires

Pupils & parents complete questionnaires annually about a range of school topics. This year, with a rise in temperatures & being mindful of equal opportunities, a short sleeved, tie-less shirt was introduced.

### **What do our pupils do after leaving this school?**

As we are the nearest Surrey Junior School to Kingston upon Thames LEA, our pupils have a wide choice of state schools from which to choose. Equally some parents choose a private school.

In 2006 our 50 Yr6 pupils have continued their education at the following schools:-

Esher High 1

Hinchley Wood 31

Milbourne Lodge 1

Richard Challoner 2

Southborough Boys 1

Tolworth Girls 13

Warminster 1

All pupils have induction days at their new schools. Some of the nearby schools send staff to talk to us & the pupils, but this is when time & numbers are viable.

Past pupils usually achieve 5 A-C grades in GCSE. Some will go to University - 2 to Oxford

### **What have we done in response to Ofsted?**

#### ICT

In August 2006, all computers in the ICT suite were replaced with flat screen monitors which enables 1:1 usage. Shelving underneath permits the space for this. A 50% increase in PCs & temperature rise have necessitated the installation of air conditioning in the suite.

All classrooms have interactive whiteboards which enables ICT to permeate throughout the curriculum.

Two new computers were installed in each classroom in the Lower School in 2005 & in 2006 in the Upper School.

#### Focused Teaching

Individual pupil targets are being written for levels & sub levels in both Literacy & Maths.

Planning in foundation subjects for the 2nd cycle has linked subjects & topics together more meaningfully.

Gifted & talented mathematicians have worked with pupils of similar ability through our PSLN of local schools. An investigative maths & extended writing task is undertaken termly.

#### Art & DT

A specialist teacher with talents in these two areas undertakes work with pupils as part of Staff's PPA time.

## **More Information**

If you would like more information about school policies, including our policies on special educational needs and disability, admissions, finance, school food and our complaints procedure, please contact us:

By telephone: 020 83981070

Our website: <http://www.longdittonsm.org.uk>

[Back to top](#)